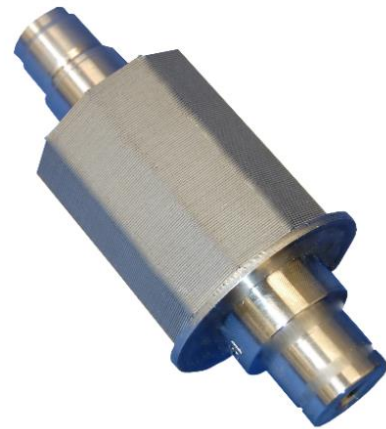


BONDING PRE-TREATMENT FOR SERVOMOTORS

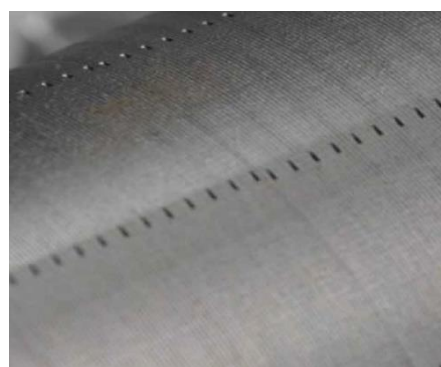


APPLICATION

- Bonding pretreatment of shafts and sheet metal stacks for rotor production
- Pretreatment of magnets for bonding as an option
- For synchronous and asynchronous three-phase and servo motors
- Long-term stable adhesion through surface modification
- Surface tensions:
 $\sigma > 38 \text{ mN/m}$
- Increase of demolition values
- Alternative or complementary to conventional blasting and washing processes



Laser processing rotor



Laser treated rotor surface

LASER SYSTEM AND PROCESS

- Even with low power systems efficient and economical
- Processing:
up to $5 \text{ cm}^2/\text{s}$ with CL 50
- Faster processing times due to higher laser power
- Process-oriented suction technology
- Optionally:
Process monitoring and component control
- Own laser production and application expertise
- Process qualification up to the serial production

COMPACT TURNKEY SOLUTION FOR YOUR SERVO MOTOR PRODUCTION

- Machine type: cleanCELL 1170
- ESD compliant design
- Footprint (W x L):
1.114 mm x 1.790 mm
- Weight: approx. 900 kg
- Variable clamping device:
Processing height < 680 mm
Rotor diameter < 150 mm
- Hand scanner for workpiece identification
- Sensor based position detection
- Automatic diameter check
- Camera system for process visualization and documentation
- High technical availability
> 98,5%
- Designed for 24/7 operation
- Customer-specific adaptations possible



cleanCELL1170 with lifting door



Ergonomic operation



Variable clamping device

COST-BENEFIT ECONOMIC EFFICIENCY

- Running costs:
cleanCELL 1170 incl. Suction
< 5,00 €/h
- Costs per unit:
Rotor d=80 mm, h=110 mm
Laser CL50 (50 Watt)
3-shift operation
~ 0,12 €/piece

PLEASE CONTACT US - WE ARE HAPPY TO ADVISE!

